

SELECTOR UNIT 2 NE135

OPERATION MANUAL OM-K0278E R

Thank you for purchasing SELECTOR UNIT 2. Read this operation manual before use to proper handling, cautions in use, and proper maintenance.

1 CAUTIONS IN HANDLING

- Connect cooling air to each air motor via supplied air branching adapter. Service life of motor will be short if not cooled.
- Use the motor within the recommended motor speed for the work and/or to used. Refer to the respective operation manual for details of recommended running speed of each motor.

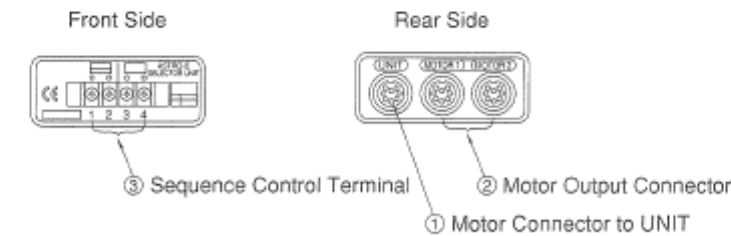
2 FEATURES

- Selector Unit 2 on control unit can mount two air motors, and can switch operation from one motor to the other.
- By sequence control, this Selector Unit 2 can be used as a combined part of the system of the mother machine.

3 SPECIFICATIONS

Model	NE135
Power Source	24 VDC
Current	90 mA
Weight	265 g
Dimensions	75 W X 111 D X 30 H (mm)

4 NOMENCLATURES



5 PRIOR TO USE

(Read also the operation manual of NE52.)

- Connecting Motor Cord Plug**
Insert the 8-pin plug cord to the motor output connector (1) located on the rear of control unit and to the motor connector (1) of Selector Unit 2. Secure with union nut.
- Connecting Air Hose**
Connect $\phi 6$ hose to the air intake joint (12) located on the rear of control unit. Supply clean compressed air of 0.3-0.5 MPa (43.5-72.5 psi), 0.5 MPa desirable, through air filter to the $\phi 6$ hose. The air pressure of 0.5 MPa is recommended. Connect air branching adapter (accessory item) to the motor cooling connector (10) on control unit.
- Connecting Motor**
Insert the motor cord plugs to Motor 1 and Motor 2, respectively, of output connector (2) on Selector Unit 2. Insert $\phi 04$ hose to the air branching adapter connected in the above step (2).
- Connecting Sequence Control**

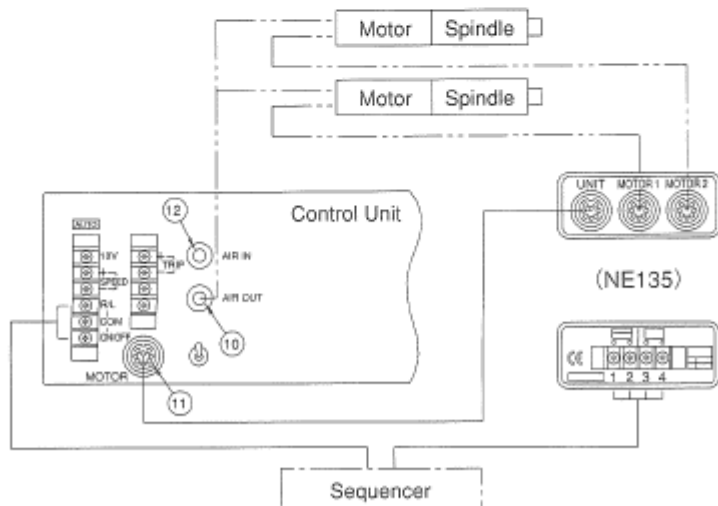


Fig. 2

6 TIMING OF CONTROL SIGNAL AND TERMINAL BOARD

- Selector unit input circuit (Sequence control terminal)**
Internal input circuit of motor select signal is shown in Fig. 5. Apply 24 VDC to the terminals 1 and 2. Motor 2 is selected, when 24 VDC is applied to the terminals 3 and 4, and motor 1 is selected at 0 V.

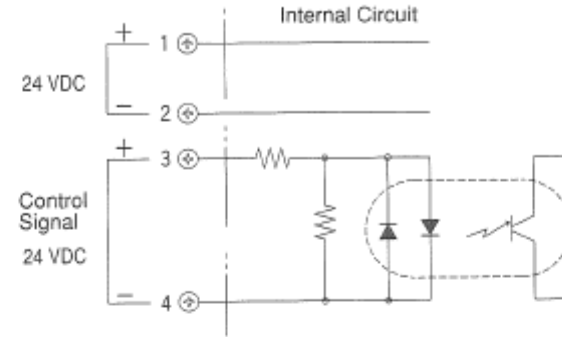


Fig. 5

- Timing of Automatic Control Signal**

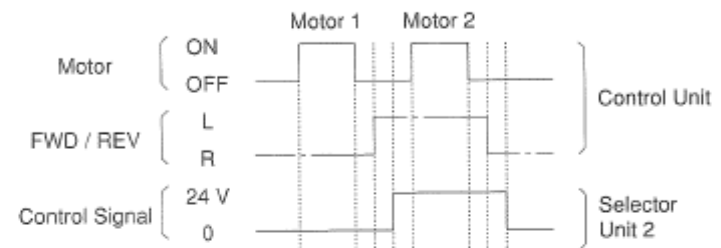
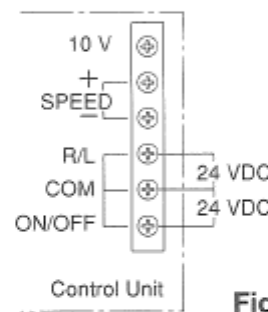


Fig. 6

- Terminal Board**



- Connection of R/L (FWD/REV) and ON/OFF when Selector Unit 2 is used is shown in Fig. 7.
- R/L Signal:
Reverse at 24 VDC.
Forward at 0 V.
- ON/OFF Signal:
Motor runs at 24 VDC.
Motor stops at 0 V.

Fig. 7

7 OPERATING PROCEDURES

Selector Unit 2 is controlled by timing signal of the automatic control, as it does not have power supply lamp to indicate.

8 PROTECTIVE CIRCUIT OF CONTROL UNIT

When the timing of control signal is off, the reset lamp of control unit may light. In that case, the motor does not run. Check the timing signal of the automatic control.

9 SYSTEM DIAGRAM OF AUTOMATIC CONTROL WITH 2 MOTORS

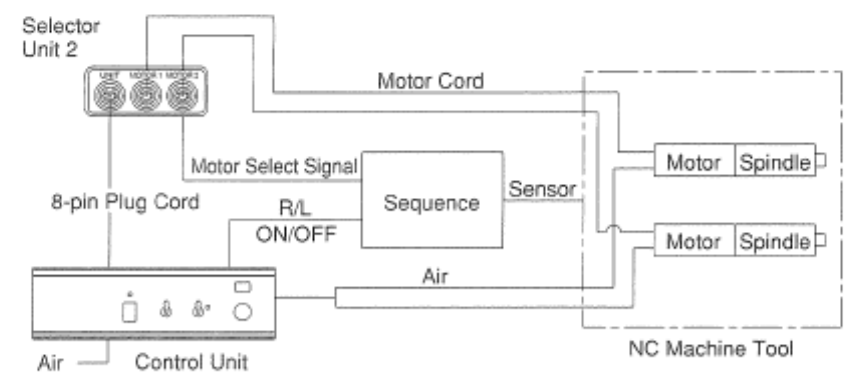


Fig. 8

Specifications may be changed without notice.

NAKANISHI INC. www.nakanishi-inc.com
Headquarter | 700 Shimahata Kanuma-shi Tochigi 322-8666 Japan
TEL : +81-(0)289-84-3390 FAX : +81-(0)289-62-5636

NSK America Corp. www.nskamerica.co
700 B Cooper Court, Schaumburg, Illinois 60173, USA
TEL : (800)-585-4675 FAX : (800)-838-9328

'06.11.003